

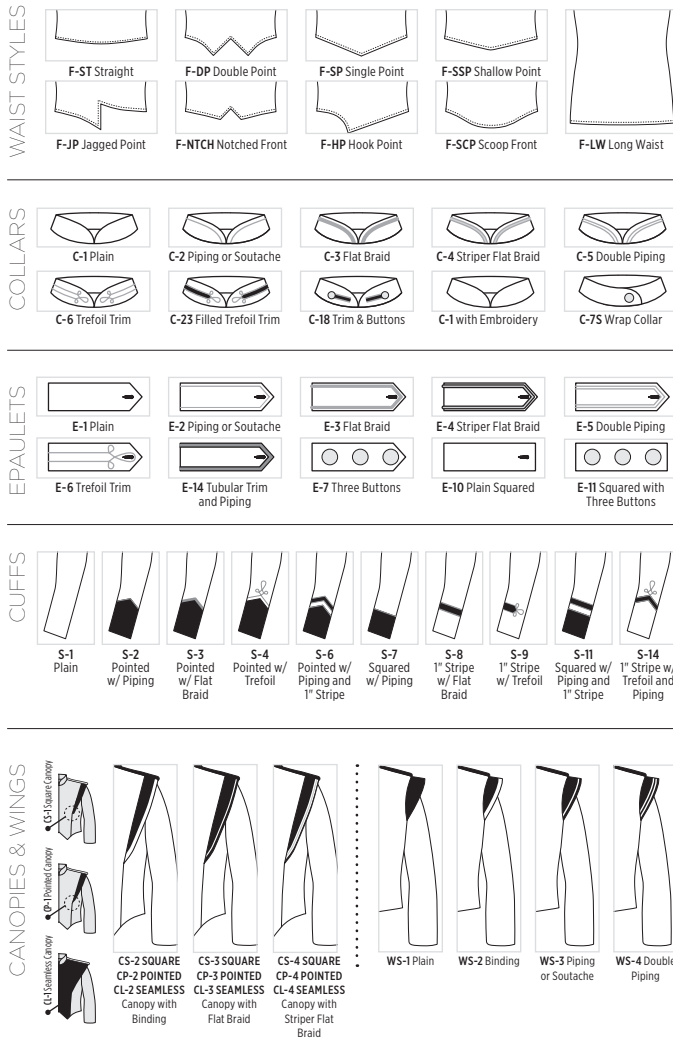
# CUSTOM MARCHING BAND UNIFORM DESIGN GUIDE



Always made in the USA, In Stock or Custom! Whether straight from the catalog or a completely original design, Band Shoppe is proud of every uniform we make. Feel free to use the attached templates to brainstorm your ideas. Our Sales Team can assist you in coming up with a unique, one-of-a-kind look that reflects your group's particular style and show theme. Planning early, communicating regularly, and avoiding major changes to your design once committed will avoid delays in getting your uniforms!

## STYLE OPTIONS:

Because our Marching Band are made to order, you're free to mix-and-match! This guide shows our most requested styles but you're not limited those shown.



**REMEMBER:** When you sign and return your "Sketch for Approval", you are stating that you have checked for accuracy. Double check spelling, artwork, color information, and pattern shape/size/dimensions.



## 100% MILLIKEN POLY

Band Shoppe proudly continues to offer VISA System 3™, a technology by Milliken, on all 100% polyester marching uniforms. Unrivaled in the industry, their polyester fabrics provide superior comfort, stain release, and moisture management. Milliken is a leader in dye lot reliability, which means your reordered uniforms will match year after year.

Contact our Sales Team for your **FREE** fabric swatches at **800.457.3501** or email [sales@bandshoppe.com](mailto:sales@bandshoppe.com)!

## PRINTED UNIFORM ARTWORK:

We can always reduce the size of an image that's too big, but making a small image larger isn't so easy. Blowing up small images creates pixelation or blurriness. A good rule of thumb is: If the image you have in mind doesn't print crisp and clear on your home printer, it will look even worse on your uniform. Our Sales and Design Teams can work with you to create dazzling all-over and individual pattern piece prints using your artwork or your choice of stock imagery. For the best quality, images should be sent at 300dpi in **jpg, psd, or tif format**, while vector files (preferred) should be in **ai, eps, or pdf format**.

*If you have a specific PMS (Pantone Matching System) color number to reference, you may submit that along with your artwork or use the attached PMS Color Chart as a **basic** reference. This chart is a helpful tool, but it should be understood that your monitor or printer settings will alter the look of certain colors. Every effort will be made to print as accurate as possible, but color variations may occur.*

**For a better color match, send a sample item or garment and we will do our best to come as close as possible.**

## BAND SHOPPE CAN DESIGN YOUR NEXT UNIFORM!

**YOU READ THAT RIGHT!** Our Sales and Design Teams will work together to create a stunning uniform that perfectly compliments your group or show theme. Just tell us a little bit about your show or theme, and let us do the work! **Our design service is provided at no cost, and includes free sketches and fabric swatches along with your price quote.**

## READY TO GET STARTED?

CALL **800.457.3501** (international) **812.963.1950** EMAIL [sales@bandshoppe.com](mailto:sales@bandshoppe.com) OR GO TO [bandshoppe.com](http://bandshoppe.com)

# BAND SHOPPE

FIRST PLACE  STARTS HERE

## READY TO GET STARTED?

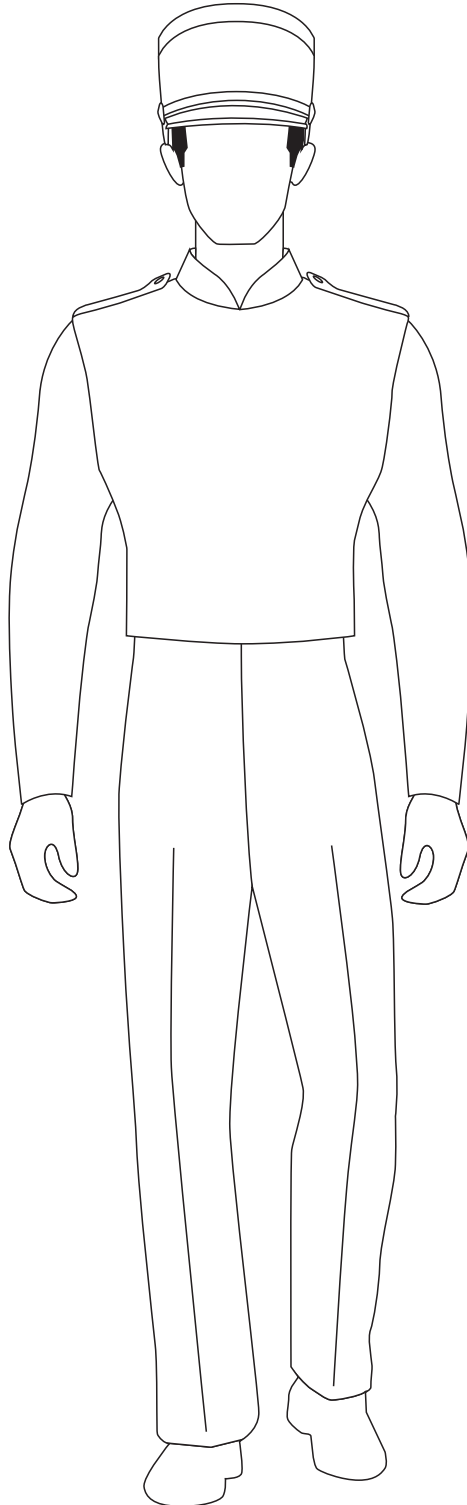
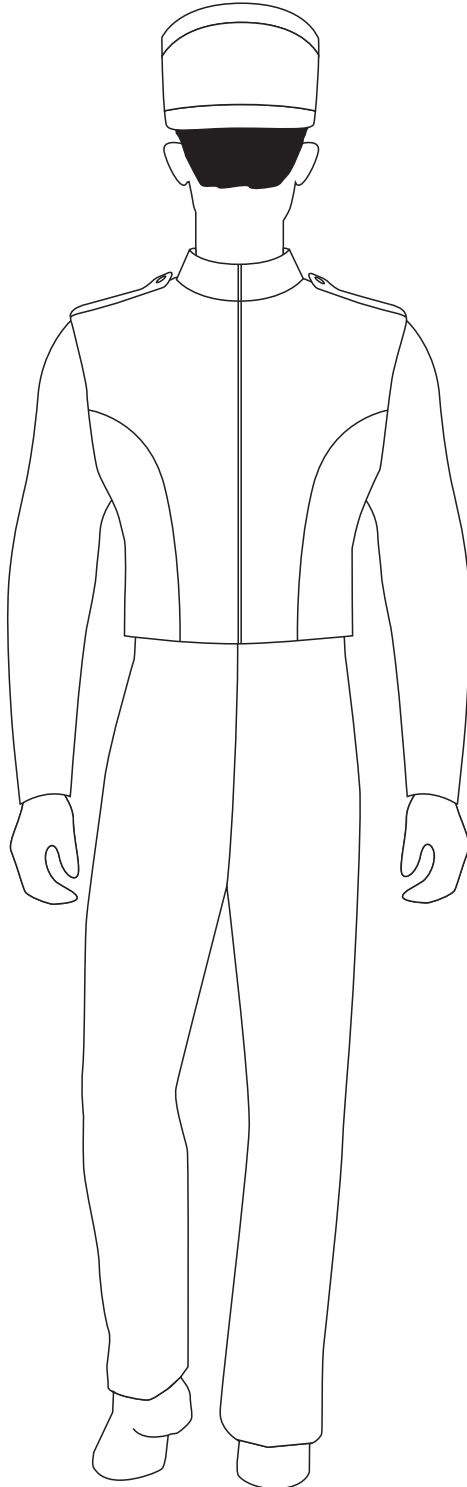
CALL 800.457.3501 (international) 812.963.1950  
EMAIL [sales@bandshoppe.com](mailto:sales@bandshoppe.com) OR GO TO [bandshoppe.com](http://bandshoppe.com)

CONTACT NAME: \_\_\_\_\_

EMAIL: \_\_\_\_\_

PHONE: \_\_\_\_\_

ORGANIZATION: \_\_\_\_\_



Remember to list any colors and fabrics you would like to use!

© Copyright 2018, Band Shoppe, Div. Pearson, Inc.



CONTACT NAME: \_\_\_\_\_

EMAIL: \_\_\_\_\_

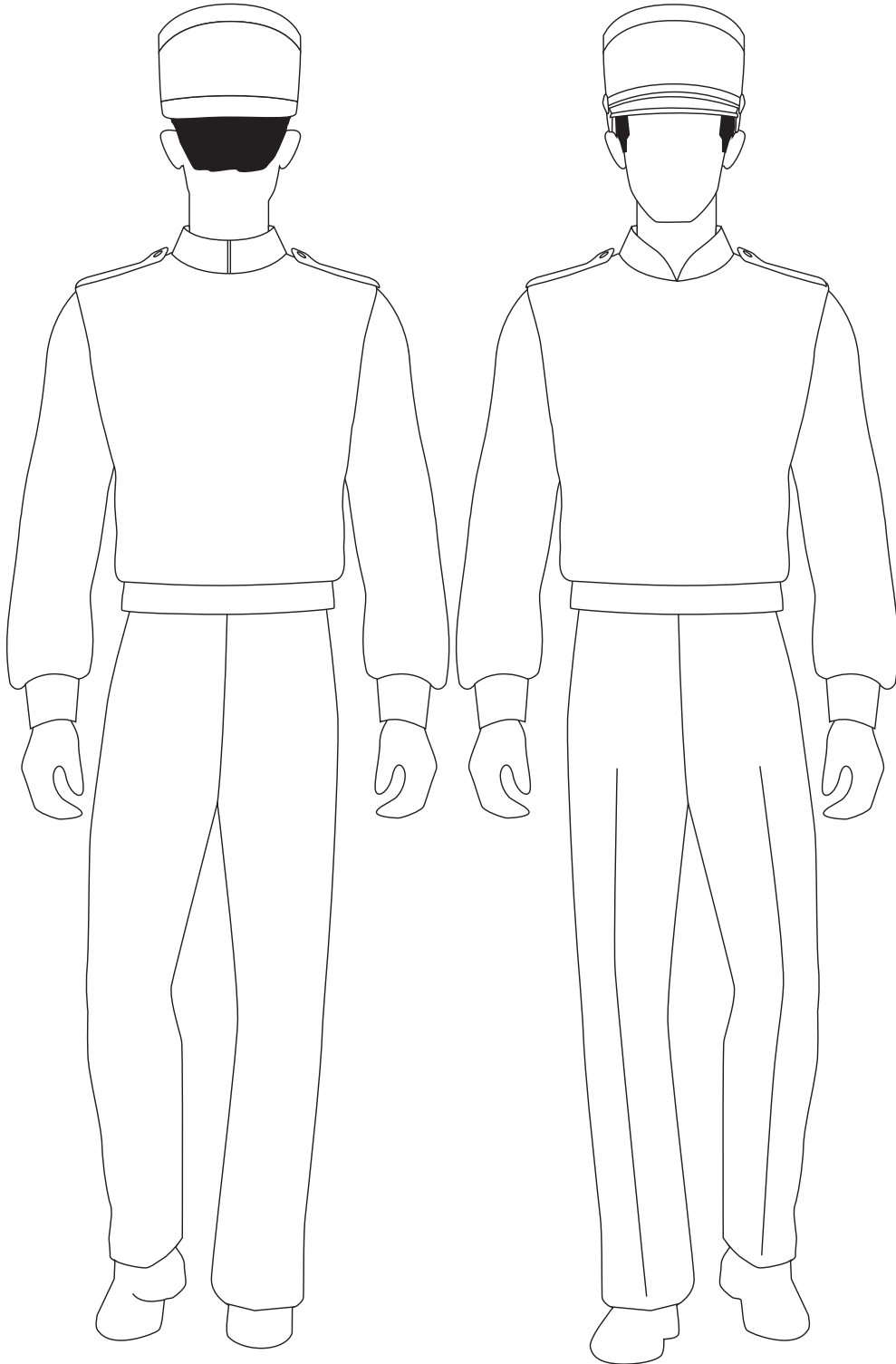
PHONE: \_\_\_\_\_

ORGANIZATION: \_\_\_\_\_

## READY TO GET STARTED?

CALL 800.457.3501 (international) 812.963.1950

EMAIL [sales@bandshoppe.com](mailto:sales@bandshoppe.com) OR GO TO [bandshoppe.com](http://bandshoppe.com)



Remember to list any colors and fabrics you would like to use!

© Copyright 2018, Band Shoppe, Div. Pearson, Inc.

## Basic Pantone Color Guide

This guide is a basic, summarized Pantone color chart for use with digitally printed flags and is for **reference only**. This chart is a helpful tool, but it should be understood that your monitor settings will alter the look of certain colors. Every effort will be made to print as accurate as possible, but color variations occur depending on the type of printer and process used.

Can't find your color? No problem, we print unlimited colors at no extra charge!

PMS 185 C	PMS 186 C	PMS 187 C	PMS 202 C	PMS 1805 C	PMS 199 C	PMS 7421 C
PMS 215 C	PMS 226 C	PMS 213C	PMS 189 C	PMS 1895 C	PMS 204 C	PMS 7424 C
PMS Yellow C	PMS 1205 C	PMS 102 C	PMS 109 C	PMS 1235 C	PMS 130 C	PMS 7550 C
PMS Blue 072 C	PMS 286 C	PMS 289 C	PMS 300 C	PMS 3005 C	PMS 2995 C	PMS 2975 C
PMS 317 C	PMS 320 C	PMS 319 C	PMS 3135 C	PMS 312 C	PMS 310 C	PMS 308 C
PMS 340 C	PMS 342 C	PMS 3435 C	PMS 346 C	PMS 354 C	PMS 351 C	PMS 368 C
PMS 374 C	PMS 377 C	PMS 382C	PMS 391 C	PMS 3975 C	PMS 5825 C	PMS 7558 C
PMS 7530 C	PMS 7504 C	PMS 7505C	PMS 476 C	PMS 7533 C	PMS 452 C	PMS 7499 C
PMS 271 C	PMS 2665C	PMS 268 C	PMS 2645 C	PMS 668 C	PMS 669 C	PMS 273 C
PMS 021 C	PMS 151 C	PMS 1505C	PMS 166 C	PMS 7577 C	PMS 173 C	PMS 167 C
PMS 7580 C	PMS 7593 C	PMS 7599C	PMS 7625 C	PMS 163 C	PMS 170 C	PMS 1625 C
PMS 420 C	PMS 421 C	PMS 423 C	PMS 425 C	PMS 426 C	BLACK	WHITE



## CUSTOM MARCHING BAND UNIFORM DESIGN GUIDELINES

Thank you for choosing Band Shoppe. Whether selecting from our catalog of custom designs or collaborating with our team to bring your unique vision to life, our streamlined process ensures your uniforms are perfectly suited to your style and performance needs.

How ordering a custom marching band uniform works at Band Shoppe:

- Designs featured at bandshoppe.com or in our print catalog are considered part of our current collection. These uniforms are made to order in your choice of sizes and colors using Milliken fabrics or digitally printed options allowing them to be produced quicker than fully custom designs requiring new patterns or major pattern modifications.
- Prices for modified designs and custom creations are provided alongside your sketch.
- Lead times vary depending on time of year and demand. We will notify you of our current manufacturing timeline at the time of quoting and ordering. **Customers are strongly encouraged to order early.**
- Fabric swatches can be requested via email or using our online contact form.
- All alterations are the responsibility of the customer.

### **CUSTOM DIGITAL PRINTING:**

A \$250 non-refundable, non-transferable setup fee applies to all custom printed uniform orders. This fee covers artwork creation, graphic and technical design, as well as a sample strike-off piece for approval.

### **MINIMUMS:**

- Band Shoppe requires a minimum order of 3 garments of the same style and colors. Less than 3 pieces may be requested, additional fees may apply.
- Orders cannot be changed or canceled once in production.
- Orders are placed on our production schedule once we receive your sketch approval, size roster, and full payment. Additions or any late information will be considered new orders and placed on the production schedule accordingly.
- Custom orders cannot be returned or exchanged.
- Additions and reorders are available with a minimum order of 3 pieces of the same style and colors. Every reasonable effort is made to provide consistent fabric availability. Uniform wear and dye lot variations may hinder color matching.
- Drum major uniforms are available up to 6 months after the main uniform order has been placed, with no minimum order quantity.

**SAMPLES:**

- Samples for approval are available for orders of 15 or more garments of the same style and colors. Swatches are also available in lieu of a sample upon availability. Customer may wave their sample with written consent.
- Sample requests must be requested immediately and will add additional time.
- Samples must be returned within 14 days. Late sample returns may delay estimated ship date for completed order. **Changes to samples may incur additional fees.**
- All additions to match a previous order are required to provide a sample uniform.

**FULLY CUSTOM UNIFORMS DESIGNS:**

- Band Shoppe’s team can design your next marching band uniform for you. Share any relevant details, such as what events or competitions your group participates in, your groups style such as Contemporary, Traditional, HBCU, Collegiate, your school colors, or other creative inspiration for the final design. If available, include specific stock image ID for reference. Band Shoppe uses Shutterstock exclusively. Our Sales Team will work closely with our in-house Design Team to create a detailed sketch tailored to your vision.
- Sketches are typically completed within 3 to 5 business days and will be sent to you via email for review. You may provide feedback and request modifications to ensure the design meets your specifications.
- Complex logos, intricate artwork, or design requests requiring five or more sketches may be subject to an additional design fee.

**FULLY CUSTOM UNIFORM PRICING:**

- Customers requesting fully custom uniforms should expect to spend a minimum of \$250.00 per uniform with a minimum pattern fee of \$350.00.
- Fully custom uniforms require a minimum order of 25 pieces of the same style and colors. Less than 25 pieces may be requested, additional fees may apply. For groups requiring less than 25 or those on a tighter budget, visit our website or review our print catalog.
- For fill-in orders, a minimum of 3 of the same style and color is required. Less than 3 pieces may be requested, additional fees may apply.
- To ensure future availability, we recommend purchasing of a few extra garments with your initial order.
- See chart below for base pricing on fully custom uniform designs including design variations, multiple styles, and/or quantities of less than 25.

NUMBER OF UNIFORMS	BASE PRICE	NUMBER OF UNIFORMS	BASE PRICE
24 – 15	Base Price + 25%	10 – 6	Base Price + 75%
15 – 11	Base Price + 50%	5 – 1	Base Price + 100%